



**Welcome to Blackmore
Primary School**

Vision & Core Values

At Blackmore Primary School our vision is to “Be the Best you can Be”. To do this, we believe that our Core Values are the foundation to all policies and procedures in the school.

- Be the best you can be
- Respect
- Independence
- Generosity
- Honesty
- Tolerance
- Enjoy learning together
- Responsibility



‘Our future is BRIGHTER at Blackmore’



Empowering Our Young Learners

Self Manager	Reflective Learner
Effective Participators	Independent Enquirer
Resourceful Thinker	Team Worker

Developing the whole child...the Blackmore citizen & the Blackmore learner

- ▶ What does being a good citizen look like in Reception and beyond?
- ▶ What does being a good learner look like in Reception and beyond?
- ❖ Working together as a team....
 - A class team
 - A house team - understand belonging and playing your part to earn house points and be proud of your house
 - A school team - following rules and routines, representing the school as a part of school council, eco committee, sporting events, school trips and in our local community and beyond
- ❖ Developing listening and attention skills
- ❖ Becoming independent - in class routines and at breaktime and lunchtime
- ❖ Developing resilience and growth mindset - self-belief is key

Curriculum Drivers



We have based our curriculum on three key drivers:



Our Place in Our World



Life Skills and Attitudes



Ambition and Possibilities

- ▶ The drivers have been chosen to promote pupils' awareness of their role in their community, their country, and their world.
- ▶ They are personal to our school and will drive and shape the themes for learning.
- ▶ The curriculum has been designed to challenge, inspire, engage & motivate all learners.

Curriculum

Core subjects

Art and Design

Computing

Design Technology

Geography

History

Music

Physical Education

Religious Education

Personal, Social, Health Education

Spanish (KS2)



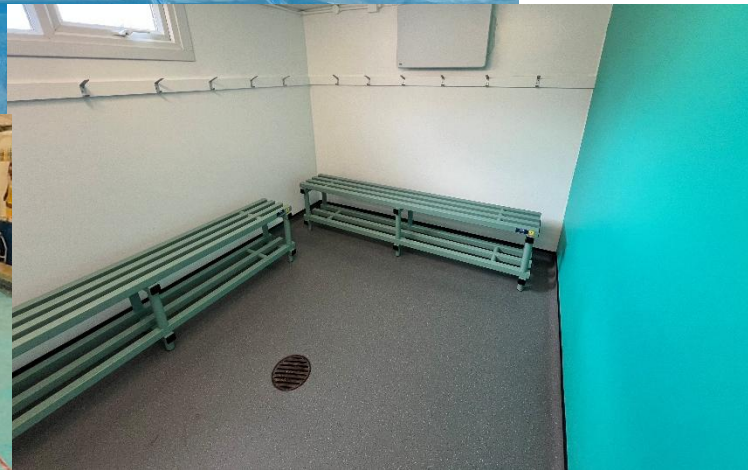
- ❖ Challenge / Mastery approach
- ❖ Moving on in lessons
- ❖ Use of TLSAs
- ❖ Inclusive practice
- ❖ Technology
- ❖ Enrichment opportunities

EYFS Curriculum



- ▶ Areas of Learning:
 - ▶ Communication and language
 - ▶ Personal, social and emotional development
 - ▶ Physical development
 - ▶ Literacy
 - ▶ Mathematics
 - ▶ Understanding the world
 - ▶ Expressive arts and design
-
- ▶ Early Learning Goals
 - ▶ Children gaining independence

Swimming Pool



- ❖ Proud of our achievements in swimming – important part of our PE curriculum
- ❖ Expectation of Class R
- ❖ Swimathon and house galas

Enhancing learning...

➤ Eco-Pod



➤ Science & Wildlife area



➤ Learning Lodge...currently under development!



Extra Curricular

Variety of clubs across the year for KS1 and KS2 including:

- ❖ Multi-skills
- ❖ Football
- ❖ Lego
- ❖ Singing club
- ❖ Young Engineers
- ❖ Cricket
- ❖ Tag Rugby
- ❖ Athletics
- ❖ Art
- ❖ Music
- ❖ Gymnastics
- ❖ Tennis
- ❖ Dodgeball
- ❖ Musical Theatre

Trips, theme days and weeks enhance our broad and balanced curriculum.

Example opportunities across the school include:

- ❖ Skipping workshop
- ❖ Caveman day
- ❖ Panto
- ❖ London theatre trips
- ❖ Young Voices concert
- ❖ Seaside visit
- ❖ Thriftwood - outdoor education
- ❖ Multicultural week
- ❖ Christmas activity day
- ❖ Year 6 - Isle of Wight
- ❖ Zoo / wildlife visit
- ❖ BYT theatre days
- ❖ Egyptian day



BLACKMORE
PRIMARY SCHOOL



Enjoy learning
together

Expectations

- ▶ Attendance
- ▶ Uniform
- ▶ Behaviour
- ▶ Homework
- ▶ Parental support - partnership between school and home
- ▶ No authorised holiday

- ▶ Intake - One class per year group. PAN 25 pupils.

School Meals



- Universal school meals for EYFS & KS1
- Opportunity to try during transition sessions
- Themed lunches



Wraparound Care



- ▶ There are local off-site options for both before and after school childcare.
- ▶ Breakfast club is run in the village hall by the preschool provider from 7.30am every morning. The children are dropped to the school gate by preschool staff.
- ▶ Afterschool club options include in the Blackmore Village Hall (provider as above) on selected weekdays and Ongar Afterschool Club (*every day except Wednesday*). Providers pick the children up from the playground. Parents collect their children directly from the provider.
- ▶ Please see our school website under 'key information' for further details and contact information.

Transition from Pre-School

- Transition mornings
- Stay for lunch
- Visits to local pre-schools – EYFS Teachers
- Home visits / phone calls prior to starting school



FOBs & Community

Parents Association events and our commitment to the Blackmore community...



Community links



Applications

Applying to Essex County Council. The council will follow the school's set criteria for admissions.

<https://www.essex.gov.uk/Education-Schools/Schools/Admissions/Pages/Apply-Online.aspx>

<https://www.essex.gov.uk/apply-for-a-primary-school-place> - video

Reception September 2026 - Applications can be made from now until the closing date 15th January 2026.

