

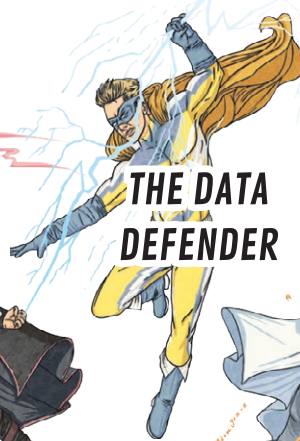
# MEET THE TEAM

STUDY SQUAD

Meet the Maths Heroes! Each of the Maths Heroes has a superpower relating to a particular unit of maths. Together, they will guide you through the concepts in this pack of revision cards.



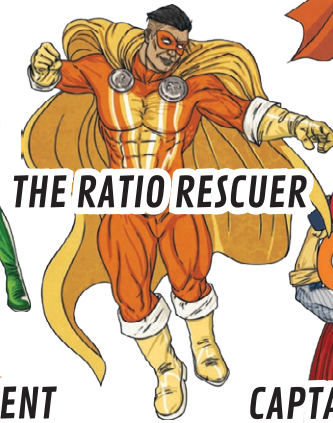
MEASURE MACHINE



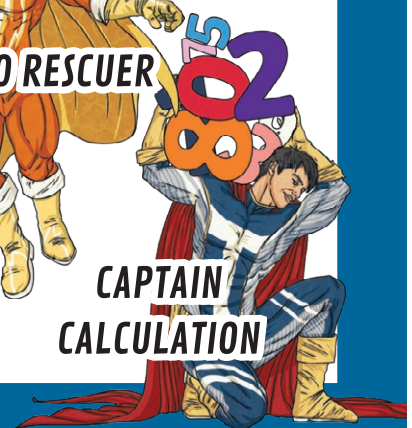
THE DATA DEFENDER



SHAPE SAVIOUR



THE RATIO RESCUER



CAPTAIN CALCULATION

twinkl.com

## KS2 Maths- SATs Revision Cards

STUDY SQUAD

Ages 10-11

### INSTRUCTIONS

Pick a card from the pack to work on. Read the questions carefully and use **paper or a whiteboard** to complete any working out. When you are ready, **turn the card over** to check your answers.

On each card, there are games and videos to help you **boost your maths superpower**. Scan the **QR codes** using a device with a camera and internet access to continue your hero training.

Are you ready to start your maths mission?

Check out the rest of the SATs Study Squad range, including our SATs Arithmetic Workbook.

SCAN ME



twinkl.com

# CONTENTS

STUDY SQUAD

1) Calculating with Whole Numbers

2) Calculating with Decimals

3) Fractions



twinkl.com

## KS2 Maths- SATs Revision Cards

STUDY SQUAD

Ages 10-11



twinkl.com

## WRITTEN ADDITION

1

$179 + 567 =$

2

=  $4523 + 981$

3

$8507 + 3198 =$

4

=  $37\,678 + 12\,465$

5

$58\,625 + 4087 + 785 =$

Boost your superpowers by watching this revision video.



## KS2 Maths- SATs Revision Cards

Ages 10-11

## ANSWERS

1) 746

2) 5504

3) 11 705

4) 50 143

5) 63 497



Practise your maths skills further with this interactive game!

SCAN ME



## WRITTEN SUBTRACTION

$$1 \quad 8563 - 495 = \boxed{\phantom{0000}}$$

$$2 \quad \boxed{\phantom{0000}} = 7432 - 2096$$

$$3 \quad 43\,406 - 5713 = \boxed{\phantom{0000}}$$

$$4 \quad \boxed{\phantom{0000}} = 56\,500 - 9950$$

$$5 \quad 80\,000 - 90 = \boxed{\phantom{0000}}$$

Boost your superpowers by watching this revision video.



## KS2 Maths- SATs Revision Cards

Ages 10-11

## ANSWERS

1) 8068

2) 5336

3) 37 693

4) 46 550

5) 79 910



Practise your maths skills further with this interactive game!

SCAN ME



# MULTIPLYING BY 10, 100 AND 1000

1  $13\ 508 \times 10 =$

2   $= 100 \times 7042$

3  $6050 \times 1000 =$

4   $= 160.7 \times 100$

5  $498.01 \times 1000 =$

Boost your superpowers by watching this revision video.



3

## KS2 Maths- SATs Revision Cards

Ages 10-11

### ANSWERS

1) 135 080

2) 704 200

3) 6 050 000

4) 16 070

5) 498 010



Practise your maths skills further with this interactive game!

SCAN ME



3

# DIVIDING BY 10, 100 AND 1000

1  $3770 \div 10 =$

2   $= 575 \div 100$

3  $25\,951 \div 1000 =$

4   $= 1472.6 \div 100$

5  $6108 \div 1000 =$

Boost your superpowers by watching this revision video.

REVISION VIDEOS



4

## KS2 Maths- SATs Revision Cards

Ages 10-11

### ANSWERS

1) 377

2) 5.75

3) 25.951

4) 14.726

5) 6.108



Practise your maths skills further with this interactive game!

SCAN ME



4

## MULTIPLES

1

$6 \times 7 =$

2

$= 1 \times 2001$

3

$72\,455 \times 0 =$

4

$= 4 \times 3 \times 8$

5

$11 \times 9 \times 10 =$

Boost your superpowers by watching this revision video.



5

## KS2 Maths- SATs Revision Cards

Ages 10-11

## ANSWERS

1) 42

2) 2001

3) 0

4) 96

5) 990



Practise your maths skills further with this interactive game!

SCAN ME



5

## FACTORS

1

$132 \div 11 =$

2

$= 640 \div 8$

3

$52 \div 4 =$

4

$= 280 \div 14$

5

$540 \div 18 =$

Boost your superpowers by watching this revision video.



6

## KS2 Maths- SATs Revision Cards

Ages 10-11

## ANSWERS

1) 12

2) 80

3) 13

4) 20

5) 30



Practise your maths skills further with this interactive game!

SCAN ME



6

# SQUARE AND CUBE NUMBERS

1

$12^2 + 5 =$

2

$= 5^3 - 12$

3

$7^2 + 3^3 =$

4

$= 4^3 - 1^2$

5

$2^3 + 11^2 + 6^2 =$

Boost your superpowers by watching this revision video.



7

## KS2 Maths- SATs Revision Cards

Ages 10-11

### ANSWERS

1) 149

2) 113

3) 76

4) 63

5) 165



Practise your maths skills further with this interactive game!

SCAN ME



7

## SHORT MULTIPLICATION

1

$47 \times 8 =$

2

=  $4 \times 526$

3

$609 \times 5 =$

4

=  $5302 \times 9$

5

$7 \times 8745 =$

Boost your superpowers by watching this revision video.



8

## KS2 Maths- SATs Revision Cards

Ages 10-11

## ANSWERS

1) 376

2) 2104

3) 3045

4) 47 718

5) 61 215



Practise your maths skills further with this interactive game!

SCAN ME



8

## LONG MULTIPLICATION

1

$693 \times 14 =$

2

=  $1593 \times 16$

3

$805 \times 36 =$

4

=  $3289 \times 45$

5

$5706 \times 58 =$

Boost your superpowers by watching this revision video.



9

## KS2 Maths- SATs Revision Cards

Ages 10-11

## ANSWERS

1) 9702

2) 25 488

3) 28 980

4) 148 005

5) 330 948

Practise your maths skills further with this interactive game!

SCAN ME



9

## SHORT DIVISION WITHOUT REMAINDERS

1

$785 \div 5 =$

2

=  $522 \div 6$

3

$1148 \div 7 =$

4

=  $2472 \div 8$

5

$7614 \div 9 =$

Boost your superpowers by watching this revision video.



10

## KS2 Maths- SATs Revision Cards

Ages 10-11

## ANSWERS

1) 157

2) 87

3) 164

4) 309

5) 846



Practise your maths skills further with this interactive game!

SCAN ME



10

**SHORT DIVISION WITH REMAINDERS**

1

$864 \div 5 =$

2

=  $701 \div 6$

3

$1658 \div 9 =$

4

=  $9803 \div 8$

5

$8175 \div 7 =$

Boost your superpowers by watching this revision video.



11

**KS2 Maths- SATs Revision Cards**

Ages 10-11

**ANSWERS**

1) 172r4

2) 116r5

3) 184r2

4) 1125r3

5) 1167r6 Accept the remainder given as a fraction or as an exact decimal.

Practise your maths skills further with this interactive game!

SCAN ME



11

## LONG DIVISION WITHOUT REMAINDERS

1

$840 \div 15 =$

2

=  $598 \div 26$

3

$2788 \div 17 =$

4

=  $6156 \div 18$

5

$8234 \div 23 =$

Boost your superpowers by watching this revision video.



12

## KS2 Maths- SATs Revision Cards

Ages 10-11

## ANSWERS

1) 56

2) 23

3) 164

4) 342

5) 358



Practise your maths skills further with this interactive game!

SCAN ME



12

## LONG DIVISION WITH REMAINDERS

1

$680 \div 14 =$

2

=  $999 \div 23$

3

$1842 \div 18 =$

4

=  $6550 \div 27$

5

$9090 \div 39 =$

Boost your superpowers by watching this revision video.



13

## KS2 Maths- SATs Revision Cards

Ages 10-11

## ANSWERS

1) 48r8

2) 43r10

3) 102r6

4) 242r16

5) 233r3 Accept the remainder given as a fraction or as an exact decimal.

Practise your maths skills further with this interactive game!

SCAN ME



13

**INVERSE OPERATIONS**

$$1 \quad 70 + \boxed{\phantom{000}} = 816$$

$$2 \quad \boxed{\phantom{000}} - 55 = 709$$

$$3 \quad 120 \times \boxed{\phantom{000}} = 960$$

$$4 \quad \boxed{\phantom{000}} \div 11 = 40$$

$$5 \quad 627 + \boxed{\phantom{000}} = 810$$

Boost your superpowers by watching this revision video.



14

**KS2 Maths- SATs Revision Cards**

Ages 10-11

**ANSWERS**

1) 746

2) 764

3) 8

4) 440

5) 183



Practise your maths skills further with this interactive game!

SCAN ME



14

**ORDER OF OPERATIONS (BIDMAS)**

1  $2^2 \times (15 - 3) =$

2   $= 24 \div 6 + 4^3$

3  $48 \div (45 - 39) =$

4   $= 4 \times 8 - (13 + 2)$

5  $6^2 + 4 - 5 \times 5 =$

Boost your superpowers by watching this revision video.



15

## KS2 Maths- SATs Revision Cards

Ages 10-11

**ANSWERS**

1) 48

2) 68

3) 8

4) 17

5) 15



Practise your maths skills further with this interactive game!

SCAN ME



15

# ADDING DECIMALS

1

$12.7 + 10.4 =$

2

$37.29 + 46.82 =$

3

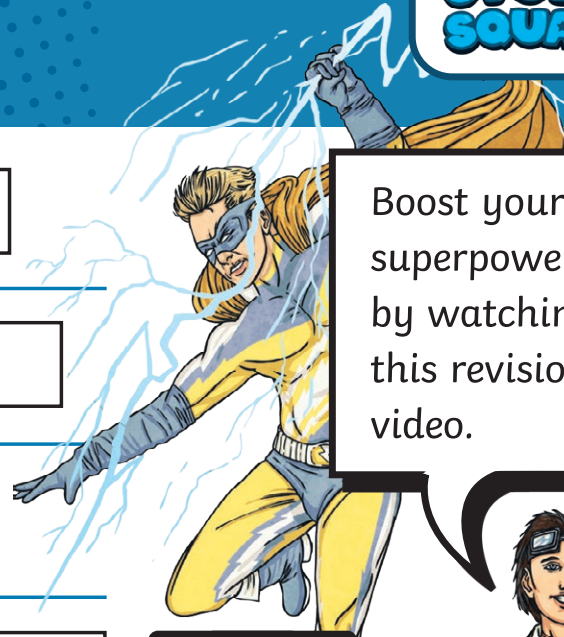
$6.14 + 2.8 =$

4

$42.09 + 516.913 =$

5

$84.605 + 28.6 =$



Boost your superpowers by watching this revision video.



## KS2 Maths- SATs Revision Cards

Ages 10-11

### ANSWERS

1) 23.1

2) 84.11

3) 8.94

4) 559.003

5) 113.205



Practise your maths skills further with this interactive game!

SCAN ME



## SUBTRACTING DECIMALS

1

$9.7 - 1.9 =$

2

$3.6 - 1.88 =$

3

$63.1 - 17.24 =$

4

$241.8 - 79.206 =$

5

$16 - 1.658 =$



Boost your superpowers by watching this revision video.



## KS2 Maths- SATs Revision Cards

Ages 10-11

## ANSWERS

1) 7.8

2) 1.72

3) 45.86

4) 162.594

5) 14.342



Practise your maths skills further with this interactive game!

SCAN ME



# MULTIPLYING WITH DECIMALS

1

$3.2 \times 6 =$

2

$10.04 \times 7 =$

3

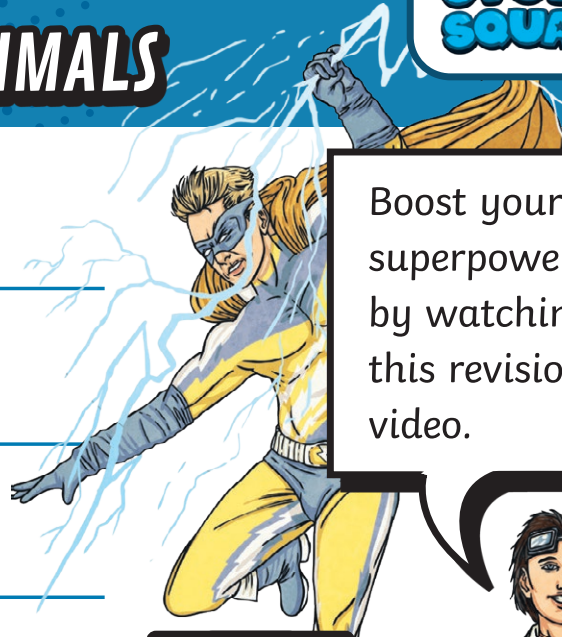
$0.9 \times 600 =$

4

$125.3 \times 8 =$

5

$66 \times 5.9 =$



Boost your superpowers by watching this revision video.



## KS2 Maths- SATs Revision Cards

Ages 10-11

### ANSWERS

1) 19.2

2) 70.28

3) 540

4) 1002.4

5) 389.4



Practise your maths skills further with this interactive game!

SCAN ME



# ADDING FRACTIONS WITH THE SAME DENOMINATOR

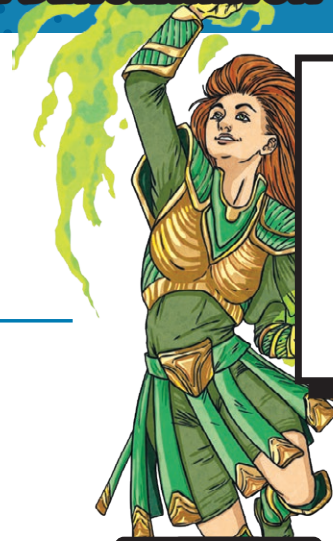
1  $\frac{4}{7} + \frac{2}{7} = \boxed{\phantom{00}}$

---

2  $\boxed{\phantom{00}} = \frac{3}{12} + \frac{4}{12}$

---

3  $\frac{9}{11} + \frac{8}{11} = \boxed{\phantom{00}}$



Boost your superpowers by watching this revision video.



1

## KS2 Maths- SATs Revision Cards

Ages 10-11

### ANSWERS

1)  $\frac{6}{7}$

2)  $\frac{7}{12}$

3)  $\frac{17}{12}$  or  $1\frac{5}{12}$



Practise your maths skills further with this interactive game!

SCAN ME



1

# ADDING FRACTIONS WITH DIFFERENT DENOMINATORS

1  $\frac{3}{5} + \frac{1}{10} =$

---

2  $\frac{4}{9} + \frac{1}{2} =$

---

3   $= \frac{1}{8} + \frac{3}{7}$

Boost your superpowers by watching this revision video.



2

## KS2 Maths- SATs Revision Cards

Ages 10-11

### ANSWERS

1)  $\frac{7}{10}$

2)  $\frac{17}{18}$

3)  $\frac{31}{56}$



Practise your maths skills further with this interactive game!

SCAN ME



2

## SUBTRACTING FRACTIONS WITH THE SAME DENOMINATOR

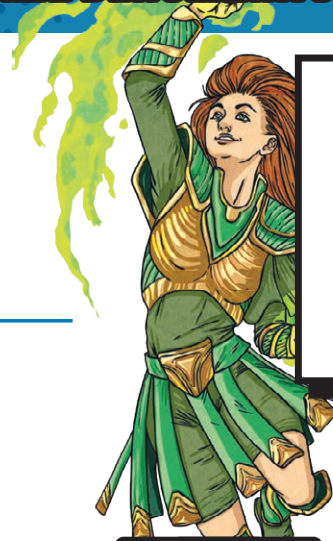
$$1 \quad \frac{8}{10} - \frac{5}{10} = \boxed{\phantom{00}}$$


---

$$2 \quad \frac{14}{12} - \frac{9}{12} = \boxed{\phantom{00}}$$


---

$$3 \quad \boxed{\phantom{00}} = \frac{19}{5} - \frac{13}{5}$$



Boost your superpowers by watching this revision video.



3

## KS2 Maths- SATs Revision Cards

Ages 10-11

## ANSWERS

1)  $\frac{3}{10}$

2)  $\frac{5}{12}$

3)  $\frac{6}{5}$  or  $1\frac{1}{5}$



Practise your maths skills further with this interactive game!

SCAN ME



3

## SUBTRACTING FRACTIONS WITH DIFFERENT DENOMINATORS

1  =  $\frac{5}{6} - \frac{1}{4}$

---

2  $\frac{7}{8} - \frac{2}{5} =$

---

3  $\frac{11}{12} - \frac{1}{7} =$



Boost your superpowers by watching this revision video.



4

## KS2 Maths- SATs Revision Cards

Ages 10-11

## ANSWERS

1)  $\frac{7}{12}$

2)  $\frac{19}{40}$

3)  $\frac{65}{84}$



Practise your maths skills further with this interactive game!

SCAN ME



4

# ADDING AND SUBTRACTING MIXED NUMBERS

1  $6\frac{4}{5} - 1\frac{1}{5} =$

---

2  $3\frac{1}{4} - \frac{7}{8} =$

---

3   $= 12 - 9\frac{5}{6}$

Boost your superpowers by watching this revision video.



5

## KS2 Maths- SATs Revision Cards

Ages 10-11

### ANSWERS

1)  $5\frac{3}{5}$

2)  $4\frac{1}{8}$  or  $\frac{33}{8}$

3)  $2\frac{1}{6}$



Practise your maths skills further with this interactive game!

SCAN ME



5

# MULTIPLYING FRACTIONS

1  $\frac{5}{7} \times \frac{1}{3} =$

---

2   $= \frac{1}{8} \times 6$

---

3  $3 \times 2\frac{2}{5} =$



Boost your superpowers by watching this revision video.



6

## KS2 Maths- SATs Revision Cards

Ages 10-11

### ANSWERS

1)  $\frac{5}{21}$

2)  $\frac{6}{8}$  or  $\frac{3}{4}$

3)  $\frac{36}{5}$  or  $7\frac{1}{5}$



Practise your maths skills further with this interactive game!

SCAN ME



6

# DIVIDING FRACTIONS

1  $\frac{5}{9} \div 4 =$

---

2  $\frac{5}{8} \div 11 =$

---

3  $\frac{7}{12} \div 9 =$



Boost your superpowers by watching this revision video.



7

## KS2 Maths- SATs Revision Cards

Ages 10-11

### ANSWERS

1)  $\frac{5}{36}$

2)  $\frac{5}{88}$

3)  $\frac{7}{108}$



Practise your maths skills further with this interactive game!

SCAN ME



7

## PERCENTAGES

1

60% of 350 = 

2

 = 90% of 120

3

15%  $\times$  60 = 

4

35% of 400 = 

5

 = 19%  $\times$  6000

Boost your superpowers by watching this revision video.



8

## KS2 Maths- SATs Revision Cards

Ages 10-11

## ANSWERS

1) 210

2) 108

3) 9

4) 140

5) 1140



Practise your maths skills further with this interactive game!

SCAN ME



8

## FRACTIONS OF AMOUNTS

1  $\frac{4}{11}$  of 88 =

---

2  $\frac{5}{6}$  of 240 =

---

3  $1\frac{1}{3} \times 40 =$



Boost your superpowers by watching this revision video.



9

## KS2 Maths- SATs Revision Cards

Ages 10-11

## ANSWERS

1) 32

2) 200

3)  $\frac{160}{3}$  or  $53\frac{1}{3}$ 

Practise your maths skills further with this interactive game!

SCAN ME



9